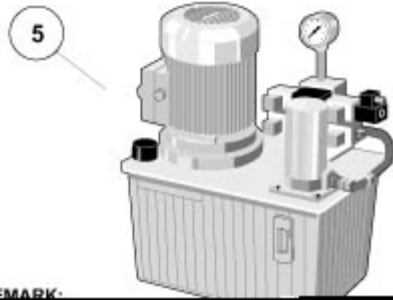
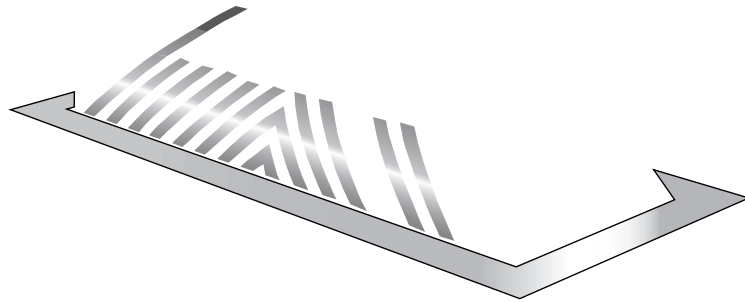


MODEL RSB73 HIGH SECURITY ROAD BLOCKER BARRIER



REMARK:



HIGH SECURITY ROAD BLOCKER BARRIER:

The Model RSB 73 High-Security Road Blocker Barrier was designed and manufactured by Automatic Systems. The Model RSB 73 is an effective means of controlling access to high security areas, which may be the target of terrorists. Typical applications include: Embassies, government buildings, police stations, military storage facilities, airport security areas, etc., The RSB 73 is utilized for wide lane management, whereas multiple units can be configured end to end. The hydraulic system can be positioned at a maximum distance of (15m, 50 feet) away from the Road Blocker Barriers. A power reserve also makes it possible to raise or to lower the Road Blocker Barrier in the event of a power failure.

DESCRIPTION:

1. Checker steel plate obstacle, (7mm, 1-1/4") thickness, welded onto a frame of thick section profiles. The Road Blocker Barrier unit is articulated on a hinge running the entire width with a stainless steel axle. Depending on the required width, the obstacle is operated by 1 or 2 heavy duty rams. Two other small rams ensure the effective locking of the obstacle in raised position, for ensuring proper resistance to an impact whatever its direction. The position control of rams is made by waterproof inductive sensors, without any movable parts.

2. The barrier front face is formed by curved (2mm, 12 gauge) plating closed at both ends, white enamelled with chevron-shaped red reflecting stripes, which encloses the mechanism.
3. Metal frame sealed into the concrete pit.
4. Control box of the hydraulic power generator with magneto-thermal overload protection, programmable control system with visual status display of all sensors. Control is by a 3-push button box (open - stop - close).
5. Hydraulic power generator, to be placed in a separate power booth (Maximum distance from Road Blocker Barrier: (15m, 50ft), which includes the following:
 - Motor unit.
 - Hydraulic pump.
 - Oil accumulator.
 - Oil tank.
 - Filter with plug and oil gauge.
 - Two hydraulic valves.
 - Manometer.
 - Pressure regulator and security valve.
6. Two-color, unidirectional traffic light (green/red) delivered with wall mounted brackets.
7. Conduit linking the barrier to the power generator. The basic equipment includes 4 flexible hoses and (5m, 16ft) of conduit. (Longer length up to (15m, 50ft) available as an option).
8. Maintenance access to hydraulic rams and position sensors is provided through the Road Blocker's checker steel plate.

Specifications subject to change without prior notice

MODEL RSB73
HIGH SECURITY
ROAD BLOCKER BARRIER
TECHNICAL DATA
ACS-1044-EN

UL FILE #E210350
USA
MANUFACTURING FACILITY
CERTIFIED NBN EN ISO 9001

 **automatic**
systems

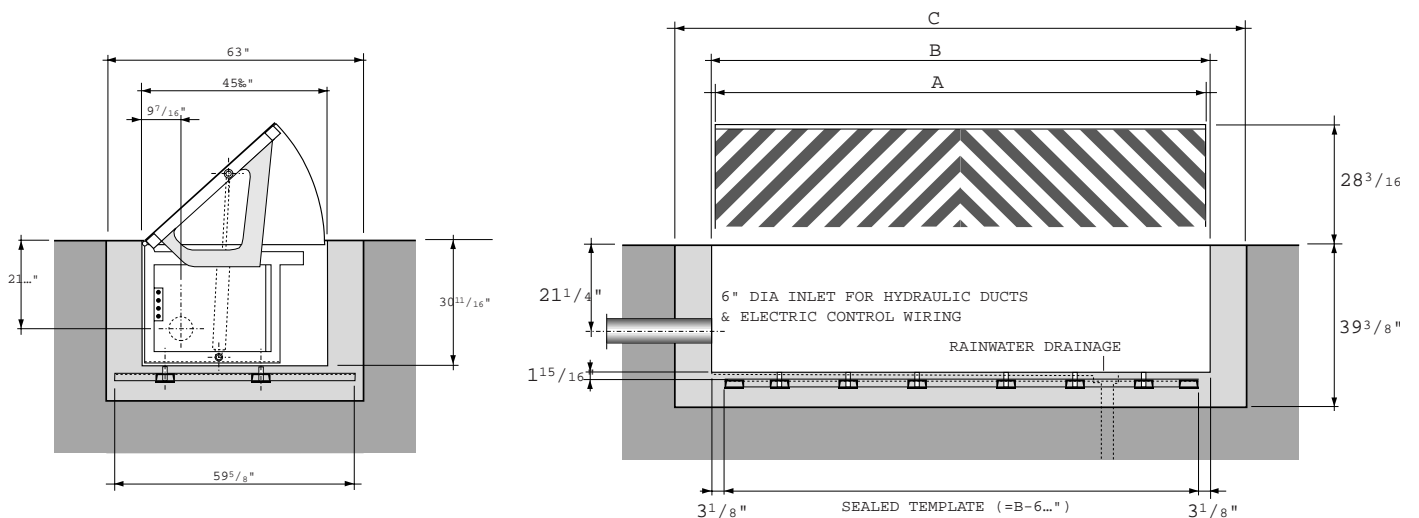
TECHNICAL CHARACTERISTICS:

- Height of raised obstacle: (665mm, 26.2").
- Standard width of obstacle: 3000mm to 4000mm, 10ft to 13ft).
- Dimensions of power unit:
 - Width: 750mm, 30 inches.
 - Height: 715mm, 28 inches.
 - Depth: 520mm, 20 inches.
- Dimensions of control box:
 - Width: 380mm, 15 inches.
 - Height: 600mm, 24 inches.
 - Depth: 210mm, 8 inches.
- Power supply for generator: 110/230V 1/3-phase.
- Power supply to control box: 110V single phase.
- Power consumption: 1.5 KW max.
- Operation temperatures: -25°C to +70°C; -13°F to +158°F.
- Net weight of power unit:
 - 3000mm length: (1170 Kg, 2,579 Lbs).
 - 4000mm length: (1575 Kg, 3,472 Lbs).
- Net weight of power unit: (150 Kg, 330 Lbs).
- Net weight of control box: (25 Kg, 55 Lbs).
- Mechanical endurance (MCBF): Million cycles.
- Operating time: 3 seconds per movement.
- Maximum load allowed: 20 Tons per axle.
- Certified NBN EN ISO 9001.

OPTIONS:

- Heater for the hydraulic elements in the excavated pit.
- Additional two-color traffic light.
- Post to install traffic light(s): standard AS model.
- Additional push button box.
- Additional hydraulic conduit.
- Card reader.
- Vehicle presence detector with inductive loop.
- Custom width of obstacle (Please consult factory).
- Painting other than standard RAL2000.

DIMENSIONS IN INCHES		
	MODEL 1	MODEL 2
A	118 1/8	157 1/2
B	120 1/16	159 7/16
C	137 13/16	177 3/16



**MODELRSB73
HIGH SECURITY
ROAD BLOCKER BARRIER
TECHNICAL DATA
ACS-1044-EN**

**UL FILE #E210350
USA
MANUFACTURING FACILITY
CERTIFIED NBN EN ISO 9001**

